

ACCESSING SMC APPS THROUGH CITRIX ON A MAC

DOWNLOADING AND INSTALLING:

You only need to follow the installation steps only **once** on each computer you intend to use for class.

1. Open a browser and go to: www.citrix.com/workspaceapp

Citrix Workspace app 2001 for Mac

Release Date: Feb 4, 2020

Compatible with:
Mac OS 10.13, 10.14, 10.15

Download Citrix Workspace app for Mac (139.7 MB - .dmg)

Version: 20.01.0.14 (2001)

Checksums
SHA256

Find Downloads

Citrix Workspace App

or

Search Downloads

Support Resources

Product Documentation

Knowledge Center

Support Forums

3. After the download finishes, Open the download package (dmg file)

CitrixWorkspaceApp.dmg

4. Click on "Install Citrix Workspace.pkg"

Install Citrix Workspace.pkg

Uninstall Citrix Workspace.app

Install Citrix Workspace

This package will run a program to determine if the software can be installed.

To keep your computer secure, you should only run programs or install software from a trusted source. If you're not sure about this software's source, click Cancel to stop the program and the installation.

5. Click "Continue"

Continue

Install Citrix Workspace

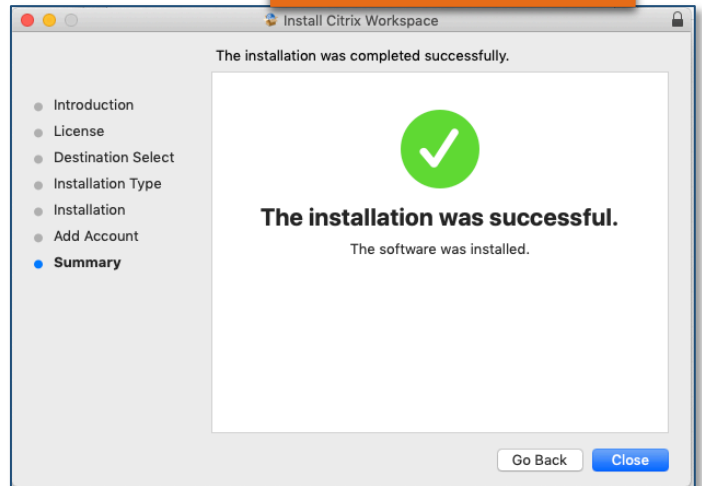
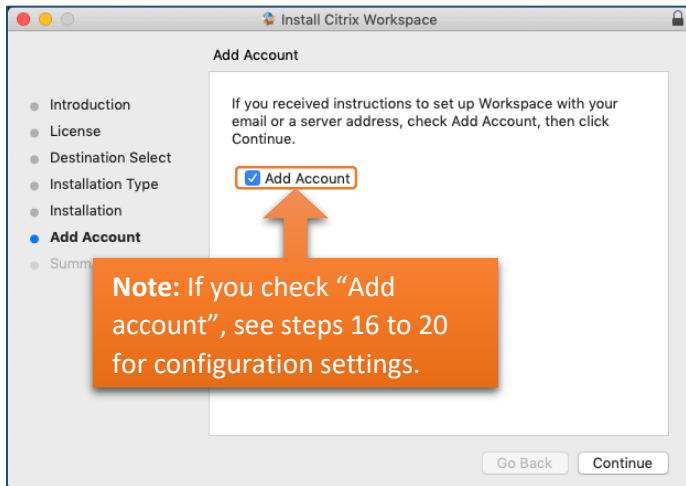
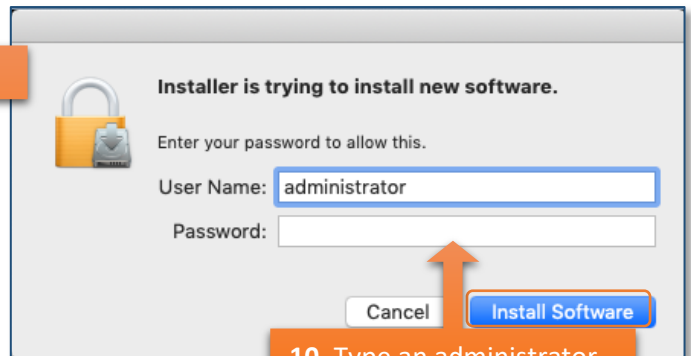
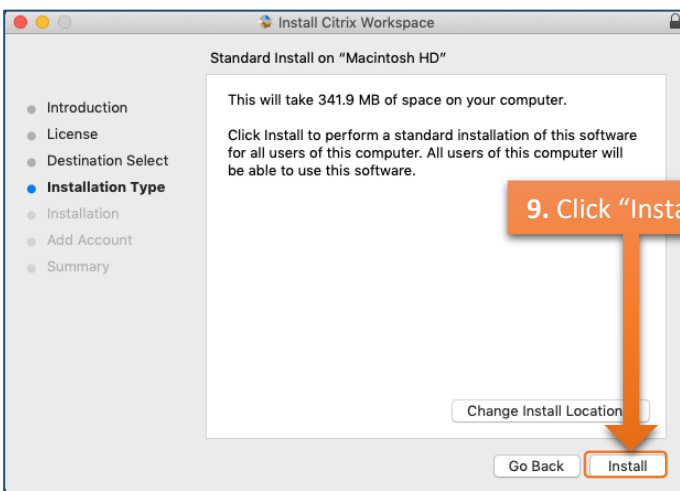
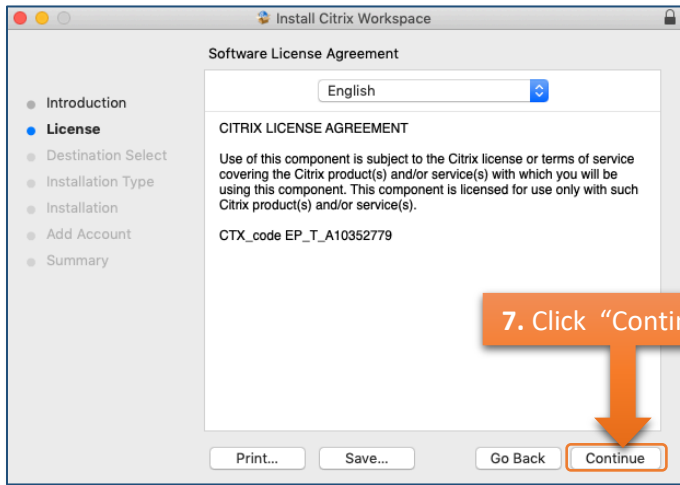
Welcome to the Citrix Workspace Installer

Citrix Workspace installs software that allows access to virtual applications that your organization provides, including software applications that use your browser.

- Introduction
- License
- Destination Select
- Installation Type
- Installation
- Add Account
- Summary

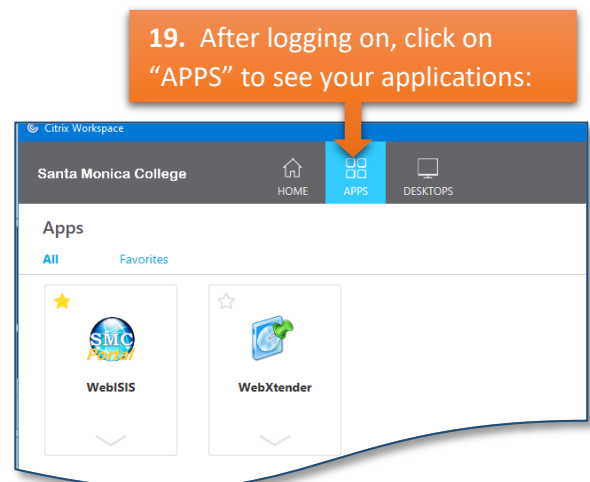
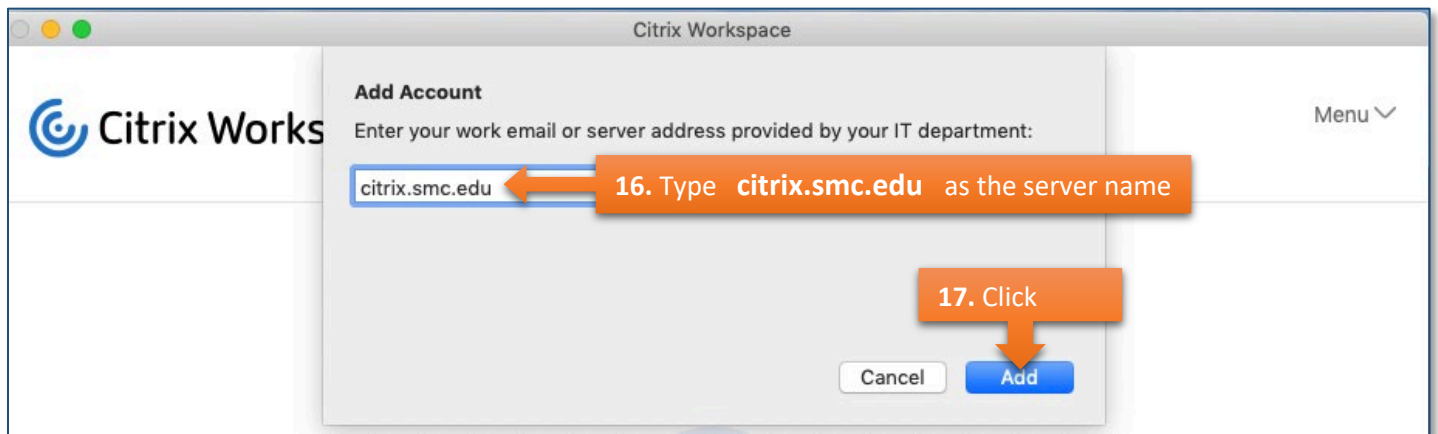
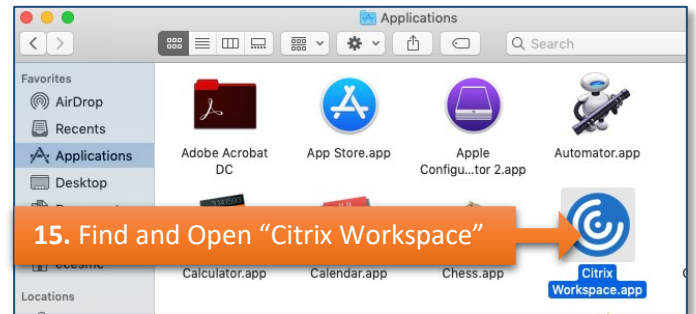
6. Click "Continue"

Continue



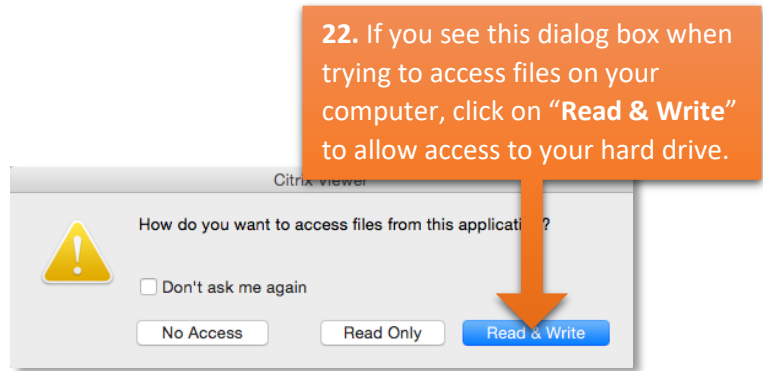
CONFIGURING CITRIX RECEIVER FOR SMC

The following steps will configure Citrix Receiver to connect to SMC servers, independent of any browser.

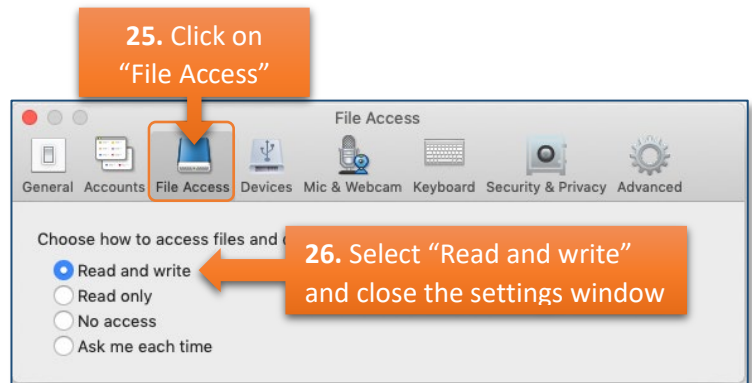
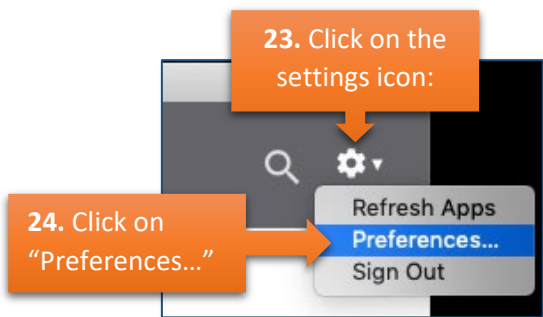


OPENING AN APPLICATION

Click on one of the Applications to start using it.

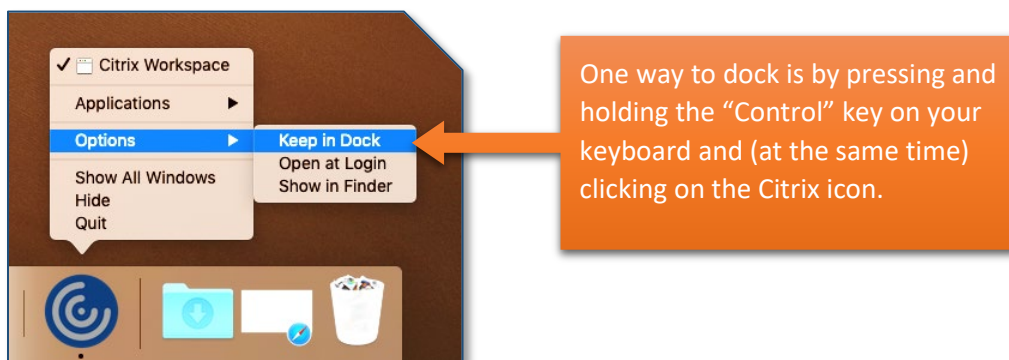


If the dialog box does not show up, follow these steps:



TIPS:

1. If you intend to use Citrix frequently, we recommend to dock the application.



2. We also recommend getting familiar with **working with files and folders on Windows (Citrix is natively a windows application)**. You can search the internet for various tutorials in text and video formats. Use the text in bold above to get the best results.