

# Modern Languages Lab

[www.smc.edu/language/ab](http://www.smc.edu/language/ab)

## Installing Microsoft Remote Desktop for Mac



1

Begin by navigating to the App Store where you can download the free Microsoft Remote Desktop app.

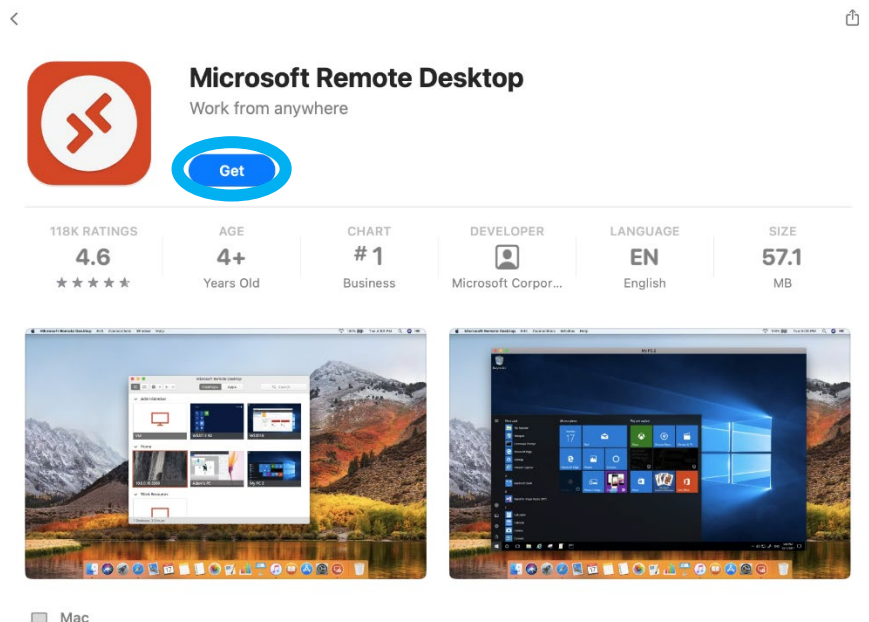
Use this link to locate the correct download page:

➤ <https://apps.apple.com/us/app/microsoft-remote-desktop/id1295203466>

You may also search for 'Microsoft Remote Desktop' in the App Store.

2

Press the 'Get' button then press 'Install' to begin downloading the Microsoft Remote Desktop app.



3

If prompted: 'Sign-in Required', then **enter your Apple account credentials and press 'Get' once more.**

**Sign-In Required**

If you have an Apple ID and password, enter them here. If you've used the iTunes Store or iCloud, for example, you have an Apple ID.

Email or Phone Number

Password

[Forgot password?](#)

4

On the 'Help us make your experience better?' screen, **press 'Not now'.**

Microsoft Remote Desktop

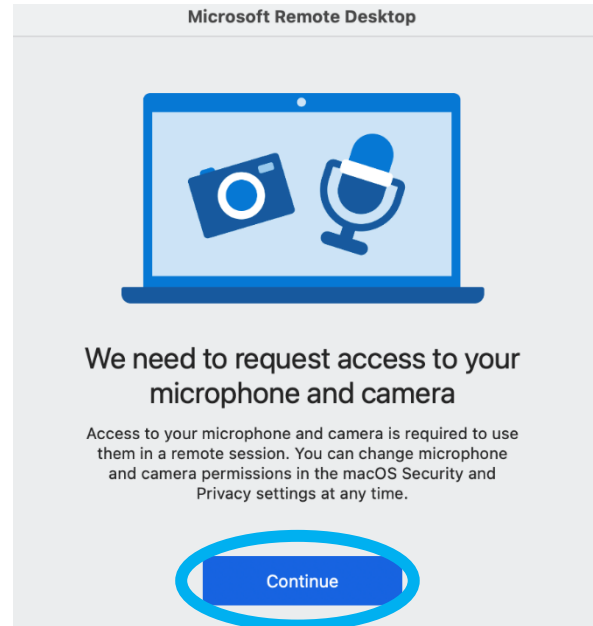
Help us make your experience better?

Sharing your usage and performance information with Microsoft helps us to improve Remote Desktop Services. You can stop sharing your information in Preferences at any time.

[Privacy statement](#)

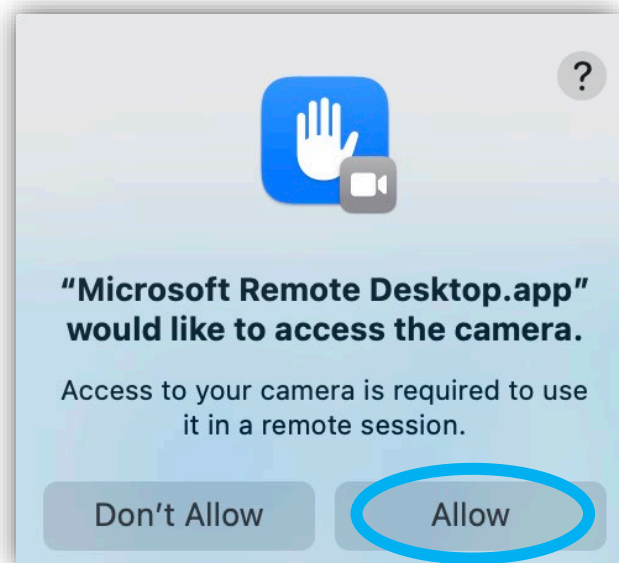
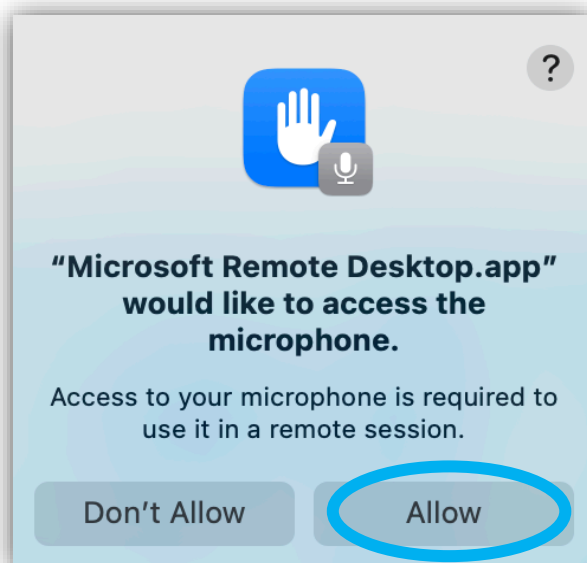
5

On the 'We need to request access to your microphone and camera' popup, select 'Continue'.



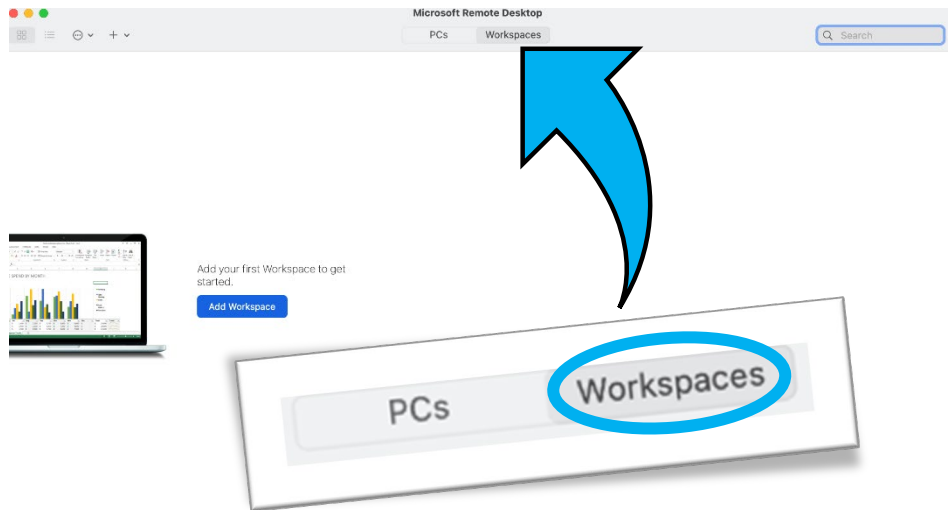
6

If prompted that "Microsoft Remote Desktop.app" would like to access the microphone/camera', press the Allow button on each pop.



7

On the Microsoft Remote Desktop app home screen, select the **'Workspaces'** option from the upper middle of the screen.



8

Press the **'Add Workspace'** button on the left side of the screen.



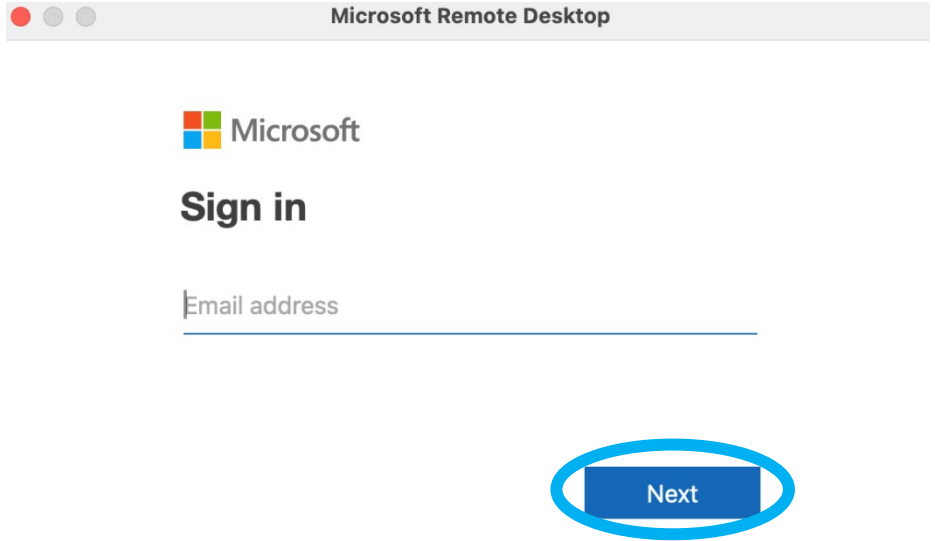
Add your first Workspace to get started

Add Workspace

# 9

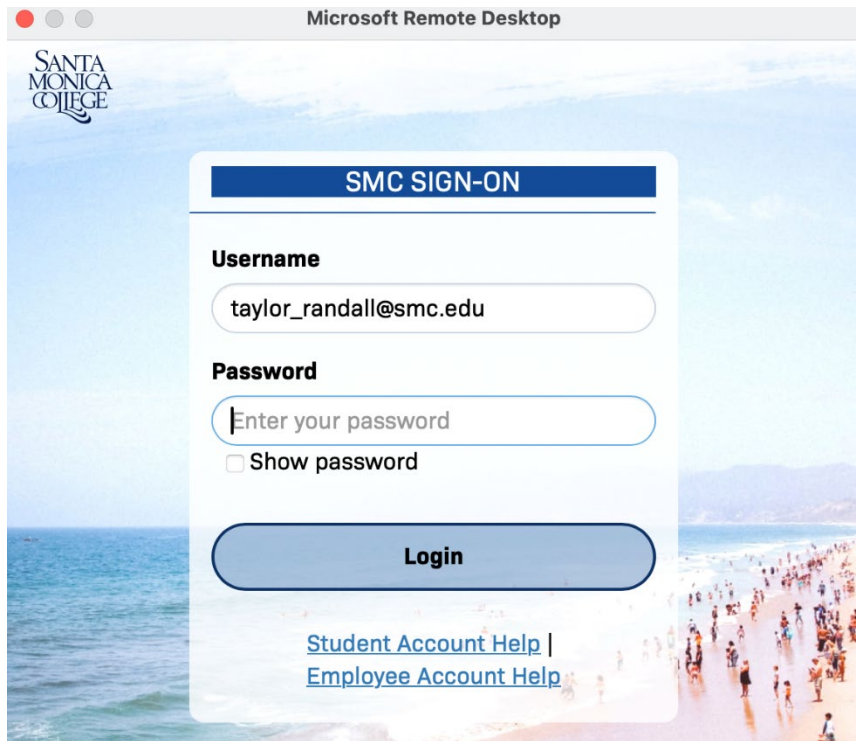
If you're prompted to sign in with a Microsoft account, **enter your SMC email address then press 'Next'.**

If you're not prompted, skip ahead to step 11



# 10

If you're prompted to sign in with the SMC Sign-On system, then **enter your SMC email address and password and press 'Login'.**



# 11

On the 'Add Workspace' menu, **enter your SMC email address and press the 'Add' button.**

## Add Workspace

A workspace is associated with this email address.

Workspace URL:

Links to remote apps, PCs and files will be downloaded and automatically updated if you add the workspace.

Privacy settings for managed resources are preset by your organization. [Learn more about privacy settings...](#)

Cancel **Add**

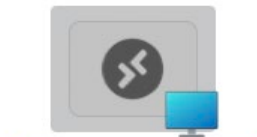
# 12

Select the 'SMC-VCL-W11' icon under the 'SMC Virtual Lab' menu.

## SMC Virtual Lab



CSIS VCL Desktop



**SMC-VCL-W11**



13

On the 'Enter Your User Account' menu, **enter your SMC email address and password then press 'Continue'**.

### Enter Your User Account

This user account will be used to connect to rdgateway-r1.wvd.microsoft.com (remote PC).

Username:

Password:

Show password

Cancel

Continue

14

You should now be ready to use the **Microsoft Remote Desktop app**. After successfully installing the app, you should be brought to the SMC Cares Virtual Computer Lab desktop where you can access the appropriate virtual resources.

**Remember to always use the 'Log Off' shortcut before you end your session.**

